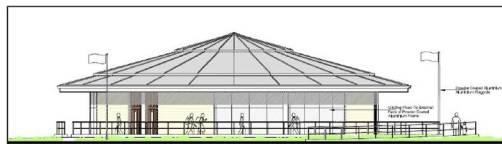
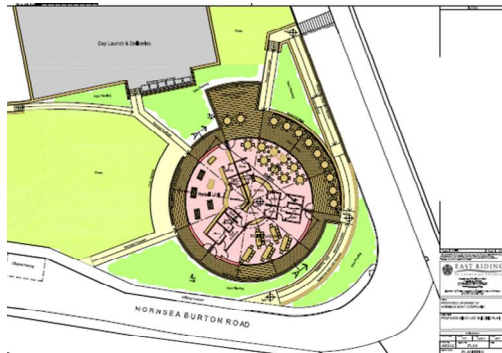


Project Experience

Hornsea South Promenade – East Riding of Yorkshire Council



Overview

Working with economic consultants KADA Research, the team provided specialist support to review and prepare a business plan to support funding applications to the Coastal Committee Fund and the European Maritime Fisheries Fund (EMFF)

Proposal included the re-modelling of boat yard; car parking and other facilities. In addition, a new seafront amenity building is proposed.

Scope

The project involved the collection of evidence to support the proposed capital investment. This included examination of demand for the new facilities and the identification of direct and indirect economic impacts. This also included preparation of five-year income and expenditure forecasts.

Outputs

The output included:

- Identification of demand
- Examination of direct and indirect economic impacts
- NPV calculations
- Five-year income and expenditure projection.